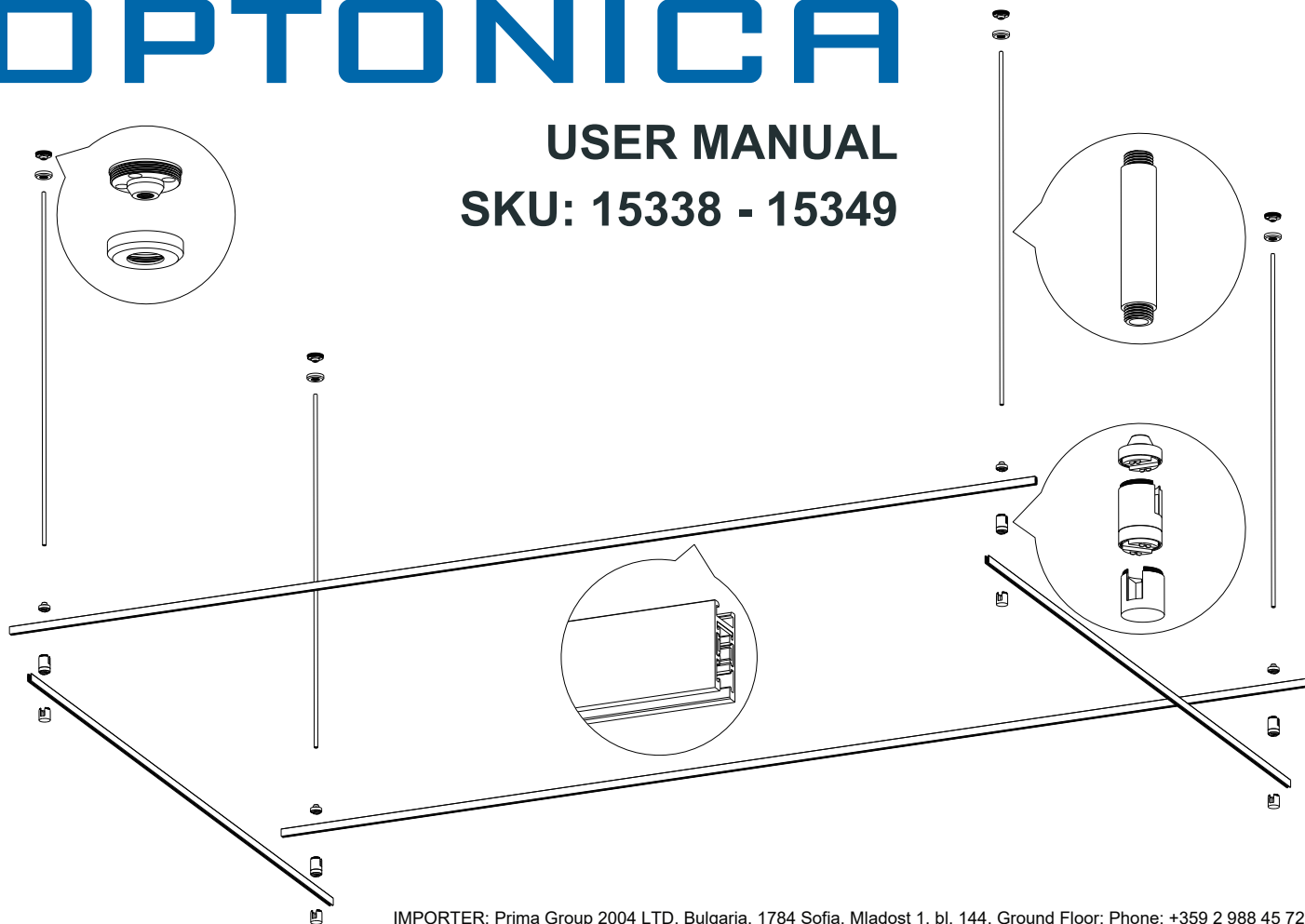


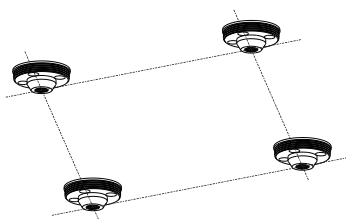
OPTONICA

USER MANUAL SKU: 15338 - 15349



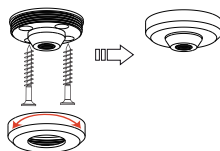
IMPORTER: Prima Group 2004 LTD, Bulgaria, 1784 Sofia, Mladost 1, bl. 144, Ground Floor; Phone: +359 2 988 45 72;

1



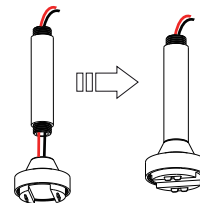
Positioning, select the outlet position to open the hole

2



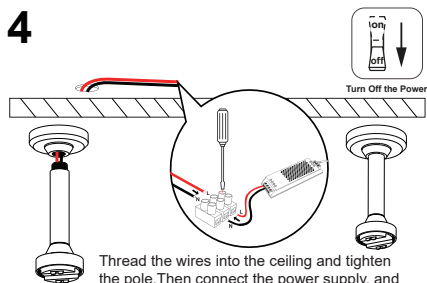
Fix the base and twist the cover back

3



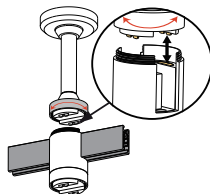
Thread one of the wires through the pole and tighten it,
If there are no wires, tighten the pole tightly

4



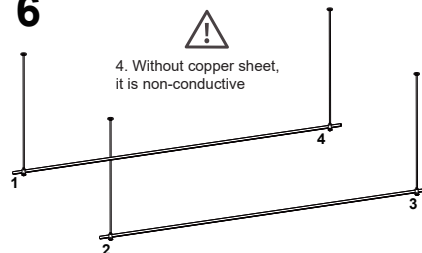
Thread the wires into the ceiling and tighten
the pole, Then connect the power supply, and
tighten the remaining poles tightly

5



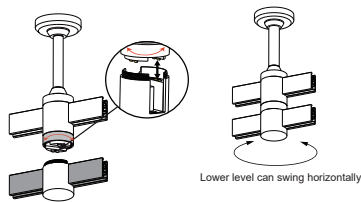
Align the track and place it on the base
Align the upper and lower checkpoints and copper plates

6



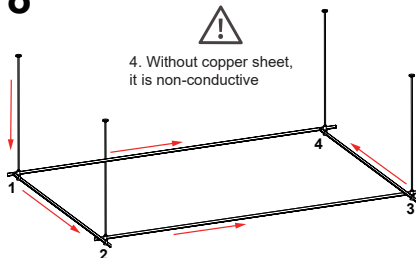
4. Without copper sheet,
it is non-conductive

7



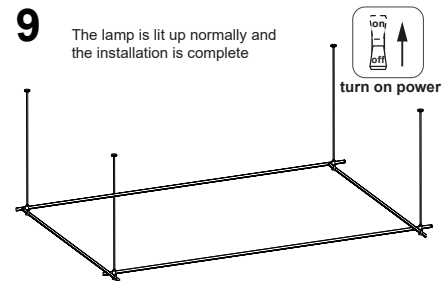
Align the track and place it on the base
Align the upper and lower checkpoints and copper plates

8



4. Without copper sheet,
it is non-conductive

9



The lamp is lit up normally and
the installation is complete

turn on power